

Sixth International Conference on The Constructed Environment

2-4 APRIL 2016 | UNIVERSITY OF ARIZONA | TUCSON, USA | CONSTRUCTEDENVIRONMENT.COM



The Constructed Environment

Sixth International Conference on The Constructed Environment

The University of Arizona | Tucson, USA | 2-4 April 2016



www.constructedenvironment.com

www.facebook.com/ConstructedEnvironment

@theconstructed | #ICCE16

International Conference on the Constructed Environment
www.constructedenvironment.com

First published in 2016 in Champaign, Illinois, USA
by Common Ground Publishing, LLC
www.commongroundpublishing.com

© 2016 Common Ground Publishing

All rights reserved. Apart from fair dealing for the purpose of study, research, criticism or review as permitted under the applicable copyright legislation, no part of this work may be reproduced by any process without written permission from the publisher. For permissions and other inquiries, please contact support@commongroundpublishing.com.

Common Ground Publishing may at times take pictures of plenary sessions, presentation rooms, and conference activities which may be used on Common Ground's various social media sites or websites. By attending this conference, you consent and hereby grant permission to Common Ground to use pictures which may contain your appearance at this event.

Designed by Ebony Jackson
Cover image by Phillip Kalantzis-Cope

Dear Constructed Environment Conference Delegates,

Welcome to Tucson and to the Sixth International Conference the Constructed Environment. The Constructed Environment Knowledge Community—its conference, journal, and book imprint—was created to explore human configurations of the environment and the interactions among the constructed, social, and natural environments.

Founded in 2010, the Inaugural International Conference on the Constructed Environment was held at the Fondazione Querini Stampalia in Venice, Italy, alongside the 12th Venice Architecture Biennale. The conference has since been hosted in Chicago in 2011; at the University of British Columbia-Robson Square in Vancouver, Canada, in 2012; in partnership with the Lisbon Architecture Triennial at the Universidade Nova de Lisboa in Lisbon, Portugal, in 2013; and at the University of Pennsylvania in Philadelphia, USA. Next year, we are honored to host the conference in partnership with the Faculty of Architecture at Cracow University of Technology in Kraków, Poland, 25-26 May 2017.

Conferences can be ephemeral spaces. We talk, learn, get inspired, but these conversations fade with time. This Knowledge Community supports a range of publishing modes in order to capture these conversations and formalize them as knowledge artifacts. We encourage you to submit your research to *The International Journal of the Constructed Environment*. We also encourage you to submit a book proposal to The Constructed Environment Book Imprint.

In partnership with our Editors and Community Partners The Constructed Environment Knowledge Community is curated by Common Ground Publishing. Founded in 1984, Common Ground Publishing is committed to building new kinds of knowledge communities, innovative in their media and forward thinking in their messages. Common Ground Publishing takes some of the pivotal challenges of our time and builds knowledge communities which cut horizontally across legacy knowledge structures. Sustainability, diversity, learning, the future of humanities, the nature of interdisciplinarity, the place of the arts in society, technology's connections with knowledge, the changing role of the university—these are deeply important questions of our time which require interdisciplinary thinking, global conversations, and cross-institutional intellectual collaborations. Common Ground is a meeting place for people, ideas, and dialogue. However, the strength of ideas does not come from finding common denominators. Rather, the power and resilience of these ideas is that they are presented and tested in a shared space where differences can meet and safely connect—differences of perspective, experience, knowledge base, methodology, geographical or cultural origins, and institutional affiliation. These are the kinds of vigorous and sympathetic academic milieus in which the most productive deliberations about the future can be held. We strive to create places of intellectual interaction and imagination that our future deserves.

I want to thank our Conference Chairs and Local Committee who have poured such a phenomenal amount of work into this conference, including Professor Jeffery S. Poss at the University Illinois at Urbana-Champaign and Professor Malcolm A. Compitello and Mary M. Portillo at The University of Arizona. I'd also like to thank my Constructed Environment Knowledge Community colleagues, Stephanie Ebersohl, Emily Kasak, and Jessica Wienhold-Brokish, who have put such a significant amount of work into this conference.

We wish you all the best for this conference, and we hope it will provide you every opportunity for dialogue with colleagues from around the corner and around the globe.

Yours sincerely,



Dr. Phillip Kalantzis-Cope
Director, Common Ground Publishing



Our Mission

Common Ground Publishing aims to enable all people to participate in creating collaborative knowledge and to share that knowledge with the greater world. Through our academic conferences, peer-reviewed journals and books, and innovative software, we build transformative knowledge communities and provide platforms for meaningful interactions across diverse media.

Our Message

Heritage knowledge systems are characterized by vertical separations—of discipline, professional association, institution, and country. Common Ground identifies some of the pivotal ideas and challenges of our time and builds knowledge communities that cut horizontally across legacy knowledge structures. Sustainability, diversity, learning, the future of the humanities, the nature of interdisciplinarity, the place of the arts in society, technology's connections with knowledge, the changing role of the university—these are deeply important questions of our time which require interdisciplinary thinking, global conversations, and cross-institutional intellectual collaborations. Common Ground is a meeting place for these conversations, shared spaces in which differences can meet and safely connect—differences of perspective, experience, knowledge base, methodology, geographical or cultural origins, and institutional affiliation. We strive to create the places of intellectual interaction and imagination that our future deserves.

Our Media

Common Ground creates and supports knowledge communities through a number of mechanisms and media. Annual conferences are held around the world to connect the global (the international delegates) with the local (academics, practitioners, and community leaders from the host community). Conference sessions include as many ways of speaking as possible to encourage each and every participant to engage, interact, and contribute. The journals and book imprints offer fully-refereed academic outlets for formalized knowledge, developed through innovative approaches to the processes of submission, peer review, and production. The knowledge community also maintains an online presence—through presentations on our YouTube channel, monthly email newsletters, as well as Facebook and Twitter feeds. And Common Ground's own software, **Scholar**, offers a path-breaking platform for online discussions and networking, as well as for creating, reviewing, and disseminating text and multi-media works.

The Constructed Environment Knowledge Community

*Exploring human configurations of
the environment and the interactions
among the constructed, social, and
natural environments*

The Constructed Environment Knowledge Community is brought together by a shared interest in the role of the constructed environment. The community interacts through an innovative, annual face-to-face conference, as well as year-round online relationships, a peer reviewed journal, and book imprint.

Conference

The conference is built upon four key features: Internationalism, Interdisciplinarity, Inclusiveness, and Interaction. Conference delegates include leaders in the field as well as emerging practitioners and scholars, who travel to the conference from all corners of the globe and represent a broad range of disciplines and perspectives. A variety of presentation options and session types offer delegates multiple opportunities to engage, to discuss key issues in the field, and to build relationships with scholars from other cultures and disciplines.

Publishing

The Constructed Environment Knowledge Community enables members to publish through two media. First, community members can enter a world of journal publication unlike the traditional academic publishing forums—a result of the responsive, non-hierarchical, and constructive nature of the peer review process. *The International Journal of the Constructed Environment* provides a framework for double-blind peer review, enabling authors to publish into an academic journal of the highest standard. The second publication medium is through the book imprint, The Constructed Environment; publishing cutting edge books in print and electronic formats.

Community

The Constructed Environment Knowledge Community offers several opportunities for ongoing communication among its members. Any member may upload video presentations based on scholarly work to the community YouTube channel. Monthly email newsletters contain updates on conference and publishing activities as well as broader news of interest. Join the conversations on Facebook and Twitter, or explore our new social media platform, **Scholar**.



Addresses the ways in which the built environment is conceptualized, competing interests negotiated, and plans represented

Theme 1: Design and Planning Processes

- Design disciplines and practices in transition: architecture, engineering, industrial design, landscape architecture
- Science in the service of technology
- Information, design, and modeling technologies
- Town and regional planning
- Local government in the planning process
- Transportation modes and structures: reconfiguring flows
- Parks in urban spaces
- Designing interior spaces
- Information flows in the constructed environment
- 'Virtual' space and 'real' space
- Form and function in space: how aesthetics relates to function
- Project planning
- Inclusive design: design for human needs, sensitive to human differences, affirming rights to access
- Involving stakeholders: participatory design
- Consultation, negotiation, and consensus building in the (re)design of the constructed environment
- Aesthetic paradigms: classicism, modernism, postmodernism, constructivism, and other 'isms

Examining the processes of constructing buildings and creating landscapes

Theme 2: Building Processes

- Building construction
- Landscape construction
- Spaces and sites of construction: urban, greenfield, rural, remote
- From design studio to construction site: design and project planning
- Project management processes and practices
- Construction activities, processes, and flows
- Time cycles, process transparency, quality management, and efficiencies
- Efficiencies: prefabrication and modularization
- The construction of access to wild spaces
- Building and construction regulation



Exploring questions
of sustainability in the
constructed environment

Theme 3: Environmental Impacts

- Materials, construction, and environmental sciences
- Helping structures change, grow or end their useable lives—adaptations, renovations, and recycling
- Green construction, sustainable building practices
- LEED and other environmental certifications
- Energy sources and destinations: reconfiguring grids
- Water needs and sources: refiguring demand and access
- Natural movements: floods, droughts, earthquakes, and other acts of nature
- Waste creation, transportation, and recycling or disposal
- Determining footprints: environmental impact analyses

Investigating the social
life of constructed
environments

Theme 4: Social Impacts

- Functions of construction: housing, commercial, public, community
- Habitats: home, work, civic, business, natural
- Spatial cultures: the ethnography of space
- Cultural diversity and the built environment
- Gender and the built environment
- Disabilities and corporeal differences in the built environment
- Heritage values and practices in design, architecture, and construction
- Addressing inequality and poverty in the built environment
- The global and the local: applying human and material resources
- Values, ethics, and aesthetics in environmental decision making
- Leadership and management in the constructed environment
- Education and training for workers in the constructed environment
- Values and ethics in the constructed and natural environments
- Research and evaluation methods in the constructed environment
- Law and regulation in and for the constructed and natural environments
- Human resources and workforces in the building and environment sectors
- Needs assessment and analysis
- Social impact analyses



Construction Functions

How does the constructed environment relate people to spaces through built forms?

In one sense, the functions of construction are visceral, arising from one of the most elemental needs of our species, the need for shelter. In another sense, they involve some of the most elaborate forms of artifice—varieties of materials, complex engineering, infrastructures of technical interconnection, relationships to nature, and an infinite variety of functions to meet the endless range of human interests and proclivities.

Constructing Aesthetics

Broadly conceived, the aesthetic is disposition, so what of the sensibility, orientation, stance of the constructed environment—apart from or, in addition to, function?

'Form follows function', proclaimed the modernists of the twentieth century. However, others have said before and since that aesthetics is a distinct domain of representation, not necessarily or entirely determined by function. Even when form follows function, there is an aesthetic. Even when we might claim an aesthetic is a travesty, or that there has been no attention to aesthetic, the aesthetic nevertheless persists.

Environmental Footprints

How is the built environment in dialogue with nature?

The built environment is inevitably in dialogue with nature. Nature provides its material sources. And the built environment invariably articulates with nature—whether that relationship is carefully premeditated or casually circumstantial.

Construction has an impact; it creates a footprint in its environment. In our century, concerns for the relationship of humans to environment increasingly deploy the rubric of sustainability. Is a practice environmentally profligate or prudent? Articulation with the environment has become one of the fundamental concerns of our times.

Human Impacts

How can a constructed environment be designed and made in such a way that it best serves the panoply of human needs?

As a human construction, our various design and fabrication practices shape our lives. The physical forms they leave a humanistic legacy. However, our human experiences and interests are irreducibly diverse. So how does a constructed environment affect different people differentially? How can it be sensitively appropriate to their varied needs? How can it be inclusive? How can potentially negative impacts be anticipated for some people and in some environmental contexts? How can risks be reduced and negative impacts mitigated?

About

The Constructed Environment Knowledge Community is dedicated to the concept of independent, peer-led groups of scholars, researchers, and practitioners working together to build bodies of knowledge related to topics of critical importance to society at large. Focusing on the intersection of academia and social impact, The Constructed Environment Knowledge Community brings an interdisciplinary, international perspective to discussions of new developments in the field, including research, practice, policy, and teaching.

Membership Benefits

As a community member you have access to a broad range of tools and resources to use in your own work:

- Digital subscription to *The International Journal of the Constructed Environment* for one year.
- Digital subscription to the book imprint for one year.
- One article publication per year (pending peer review).
- Participation as a reviewer in the peer review process, with the opportunity to be listed as an Associate Editor after reviewing three or more articles.
- Subscription to the community e-newsletter, providing access to news and announcements for and from the knowledge community.
- Option to add a video presentation to the community YouTube channel.
- Free access to the **Scholar** social knowledge platform, including:
 - ◊ Personal profile and publication portfolio page.
 - ◊ Ability to interact and form communities with peers away from the clutter and commercialism of other social media.
 - ◊ Optional feeds to Facebook and Twitter.
 - ◊ Complimentary use of **Scholar** in your classes—for class interactions in its Community space, multimodal student writing in its Creator space, and managing student peer review, assessment, and sharing of published work.

Present and Participate in the Conference

You have already begun your engagement in the community by attending the conference, presenting your work, and interacting face-to-face with other members. We hope this experience provides a valuable source of feedback for your current work and the possible seeds for future individual and collaborative projects, as well as the start of a conversation with community colleagues that will continue well into the future.

[www.facebook.com/
ConstructedEnvironment](https://www.facebook.com/ConstructedEnvironment)

@theconstructed

#ICCE16

Publish Journal Articles or Books

We encourage you to submit an article for review and possible publication in the journal. In this way, you may share the finished outcome of your presentation with other participants and members of the community. As a member of the community, you will also be invited to review others' work and contribute to the development of the community knowledge base as an Associate Editor. As part of your active membership in the community, you also have online access to the complete works (current and previous volumes) of journal and to the book imprint. We also invite you to consider submitting a proposal for the book imprint.

Engage through Social Media

There are several ways to connect and network with community colleagues:



Email Newsletters: Published monthly, these contain information on the conference and publishing, along with news of interest to the community. Contribute news or links with a subject line 'Email Newsletter Suggestion' to support@constructedenvironment.com.



Scholar: Common Ground's path-breaking platform that connects academic peers from around the world in a space that is modulated for serious discourse and the presentation of knowledge works.



Facebook: Comment on current news, view photos from the conference, and take advantage of special benefits for community members at: <https://www.facebook.com/ConstructedEnvironment>.



Twitter: Follow the community @theconstructed and talk about the conference with #ICCE16.



YouTube Channel: View online presentations or contribute your own at <http://commongroundpublishing.com/support/uploading-your-presentation-to-youtube>.



The principal role of the Advisory Board is to drive the overall intellectual direction of The Constructed Environment Knowledge Community and to consult on our foundational themes as they evolve along with the currents of the field. Board members are invited to attend the annual conference and provide important insights on conference development, including suggestions for speakers, venues, and special themes. We also encourage board members to submit articles for publication consideration to *The International Journal of the Constructed Environment* as well as proposals or completed manuscripts to The Constructed Environment Book Imprint.

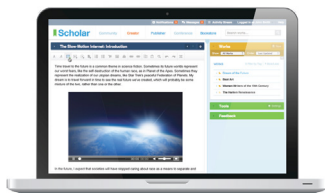
We are grateful for the continued service and support of the following world-class scholars and practitioners.

- **Kathryn H. Anthony**, School of Architecture, University of Illinois at Urbana-Champaign, Urbana-Champaign, USA
- **Naima Chabbi-Chemrouk**, Architecture and Environment Research Unit, Ecole Polytechnique d'Architecture et d'Urbanisme, Algiers, Algeria
- **Tracy S. Harris**, The American Institute of Architects, Washington, D.C., USA
- **Erik Hemingway**, hemingway+a/studio, Chicago and The Illinois School of Architecture, University of Illinois at Urbana-Champaign, Urbana-Champaign, USA
- **Jeffery S. Poss**, FAIA, School of Architecture, University of Illinois at Urbana-Champaign, Urbana-Champaign, USA
- **Khaled Tarabieh**, The American University in Cairo, Cairo, Egypt

A Social Knowledge Platform

Create Your Academic Profile and Connect to Peers

Developed by our brilliant Common Ground software team, **Scholar** connects academic peers from around the world in a space that is modulated for serious discourse and the presentation of knowledge works.



Utilize Your Free Scholar Membership Today through

- Building your *academic profile* and list of published works.
- Joining a community with a *thematic or disciplinary focus*.
- Establishing a new knowledge community *relevant to your field*.
- Creating *new academic work* in our innovative publishing space.
- Building a *peer review network* around your work or courses.

Scholar Quick Start Guide

1. Navigate to <http://cgscholar.com>. Select [**Sign Up**] below 'Create an Account'.
2. Enter a "**blip**" (a very brief one-sentence description of yourself).
3. Click on the "**Find and join communities**" link located under the YOUR COMMUNITIES heading (On the left hand navigation bar).
4. Search for a community to join or create your own.

Scholar Next Steps – Build Your Academic Profile

- **About:** Include information about yourself, including a linked CV in the top, dark blue bar.
- **Interests:** Create searchable information so others with similar interests can locate you.
- **Peers:** Invite others to connect as a peer and keep up with their work.
- **Shares:** Make your page a comprehensive portfolio of your work by adding publications in the Shares area - be these full text copies of works in cases where you have permission, or a link to a bookstore, library or publisher listing. If you choose Common Ground's hybrid open access option, you may post the final version of your work here, available to anyone on the web if you select the 'make my site public' option.
- **Image:** Add a photograph of yourself to this page; hover over the avatar and click the pencil/edit icon to select.
- **Publisher:** All Common Ground community members have free access to our peer review space for their courses. Here they can arrange for students to write multimodal essays or reports in the Creator space (including image, video, audio, dataset or any other file), manage student peer review, co-ordinate assessments, and share students' works by publishing them to the Community space.

A Digital Learning Platform

Use **Scholar** to Support Your Teaching

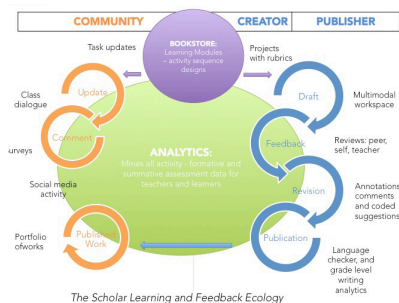
Scholar is a social knowledge platform that *transforms the patterns of interaction in learning by putting students first*, positioning them as knowledge producers instead of passive knowledge consumers. **Scholar** provides scaffolding to encourage making and sharing knowledge drawing from multiple sources rather than memorizing knowledge that has been presented to them.

Scholar also answers one of the most fundamental questions students and instructors have of their performance, “How am I doing?” Typical modes of assessment often answer this question either too late to matter or in a way that is not clear or comprehensive enough to meaningfully contribute to better performance.

A collaborative research and development project between Common Ground and the College of Education at the University of Illinois, **Scholar** contains a knowledge community space, a multimedia web writing space, a formative assessment environment that facilitates peer review, and a dashboard with aggregated machine and human formative and summative writing assessment data.

The following **Scholar** features are only available to Common Ground Knowledge Community members as part of their membership. Please email us at support@cgscholar.com if you would like the complimentary educator account that comes with participation in a Common Ground conference.

- Create projects for groups of students, involving draft, peer review, revision and publication.
- Publish student works to each student's personal portfolio space, accessible through the web for class discussion.
- Create and distribute surveys.
- Evaluate student work using a variety of measures in the assessment dashboard.



Scholar is a generation beyond learning management systems. It is what we term a *Digital Learning Platform*—it transforms learning by engaging students in powerfully horizontal “social knowledge” relationships. **For more information, visit: <http://knowledge.cgscholar.com>.**

The Constructed Environment Journal

*Aiming to be a definitive resource
on human configurations of the
environment and the interactions
among the constructed, social, and
natural environments*



About

The International Journal of the Constructed Environment publishes broad-ranging and interdisciplinary articles on human configurations of the environment and the interactions between the constructed, social, and natural environments. The journal brings together researchers, teachers, and practitioners. The resulting articles weave between the empirical and the theoretical, research and its application, the ideal and the pragmatic, and spaces which are in their orientations private, public, communal, or commercial.

As well as papers of a traditional scholarly type, this journal invites presentations of practice—including experimental forms of documentation and exegesis which can with equal validity be interrogated through a process of peer review. This might, for instance, take the form of a series of images and plans, with explanatory notes which articulate with other, significantly similar or different and explicitly referenced places, sites, or material objects.

The International Journal of the Constructed Environment is peer-reviewed, supported by rigorous processes of criterion-referenced article ranking and qualitative commentary, ensuring that only intellectual work of the greatest substance and highest significance is published.

Indexing

Art Source (EBSCO)
EBSCO Polytechnic Studies
Collection: India
Environment Complete
(EBSCO)
Environment Index (EBSCO)
The Australian Research
Council (ERA)

DOI:

10.18848/2154-8587/CGP

Founded:

2010

Publication Frequency:

Quarterly (March, June,
September, December)

ISSN:

2154-8587 (Print)
2154-8595 (Online)

[constructed
environment.com](http://constructedenvironment.com)

ijv.cgpublisher.com

Editor



Cidália Ferreira Silva, Lab2PT, School of Architecture, University of Minho, Braga,
Portugal

Associate Editors

Articles published in *The International Journal of the Constructed Environment* are peer reviewed by scholars who are active members of The Constructed Environment Knowledge Community. Reviewers may be past or present conference delegates, fellow submitters to the journal, or scholars who have volunteered to review papers (and have been screened by Common Ground's editorial team). This engagement with the knowledge community, as well as Common Ground's synergistic and criterion-based evaluation system, distinguishes the peer review process from journals that have a more top-down approach to refereeing. Reviewers are assigned to papers based on their academic interests and scholarly expertise. In recognition of the valuable feedback and publication recommendations that they provide, reviewers are acknowledged as Associate Editors in the volume that includes the paper(s) they reviewed. Thus, in addition to *The International Journal of the Constructed Environment* Editors and Advisory Board, the Associate Editors contribute significantly to the overall editorial quality and content of the journal.

Journal Submission Process and Timeline

Below, please find step-by-step instructions on the journal article submission process:

1. Submit a conference presentation proposal.
2. Once your conference presentation proposal has been accepted, you may submit your article by clicking the “Add a Paper” button on the right side of your proposal page. You may upload your article anytime between the first and the final submission deadlines. (See dates below)
3. Once your article is received, it is verified against template and submission requirements. If your article satisfies these requirements, your identity and contact details are then removed, and the article is matched to two appropriate referees and sent for review. You can view the status of your article at any time by logging into your CGPublisher account at www.CGPublisher.com.
4. When both referee reports are uploaded, and after the referees’ identities have been removed, you will be notified by email and provided with a link to view the reports.
5. If your article has been accepted, you will be asked to accept the Publishing Agreement and submit a final copy of your article. If your paper is accepted with revisions, you will be required to submit a change note with your final submission, explaining how you revised your article in light of the referees’ comments. If your article is rejected, you may resubmit it once, with a detailed change note, for review by new referees.
6. Once we have received the final submission of your article, which was accepted or accepted with revisions, our Publishing Department will give your article a final review. This final review will verify that you have complied with the Chicago Manual of Style (16th edition), and will check any edits you have made while considering the feedback of your referees. After this review has been satisfactorily completed, your paper will be typeset and a proof will be sent to you for approval before publication.
7. Individual articles may be published “Web First” with a full citation. Full issues follow at regular, quarterly intervals. All issues are published 4 times per volume (except the annual review, which is published once per volume).

Submission Timeline

You may submit your article for publication to the journal at any time throughout the year. The rolling submission deadlines are as follows:

- Submission Round 1 – 15 January
- Submission Round 2 – 15 April
- Submission Round 3 – 15 July
- Submission Round 4 (final) – 15 October

Note: If your article is submitted after the final deadline for the volume, it will be considered for the following year’s volume. The sooner you submit, the sooner your article will begin the peer review process. Also, because we publish “Web First,” early submission means that your article may be published with a full citation as soon as it is ready, even if that is before the full issue is published.

Hybrid Open Access

All Common Ground Journals are Hybrid Open Access. Hybrid Open Access is an option increasingly offered by both university presses and well-known commercial publishers.

Hybrid Open Access means some articles are available only to subscribers, while others are made available at no charge to anyone searching the web. Authors pay an additional fee for the open access option. Authors may do this because open access is a requirement of their research-funding agency, or they may do this so non-subscribers can access their article for free.

Common Ground's open access charge is \$250 per article—a very reasonable price compared to our hybrid open access competitors and purely open access journals resourced with an author publication fee. Digital articles are normally only available through individual or institutional subscriptions or for purchase at \$5 per article. However, if you choose to make your article Open Access, this means anyone on the web may download it for free.

Paying subscribers still receive considerable benefits with access to all articles in the journal, from both current and past volumes, without any restrictions. However, making your paper available at no charge through Open Access increases its visibility, accessibility, potential readership, and citation counts. Open Access articles also generate higher citation counts.

Institutional Open Access

Common Ground is proud to announce an exciting new model of scholarly publishing called Institutional Open Access.

Institutional Open Access allows faculty and graduate students to submit articles to Common Ground journals for unrestricted open access publication. These articles will be freely and publicly available to the whole world through our hybrid open access infrastructure. With Institutional Open Access, instead of the author paying a per-article open access fee, institutions pay a set annual fee that entitles their students and faculty to publish a given number of open access articles each year.

The rights to the articles remain with the subscribing institution. Both the author and the institution can also share the final typeset version of the article in any place they wish, including institutional repositories, personal websites, and privately or publicly accessible course materials. We support the highest Sherpa/Romeo access level—Green.

For more information on how to make your article Open Access, or information on Institutional Open Access, please contact us at support@commongroundpublishing.com.

International Award for Excellence

The International Journal of the Constructed Environment presents an annual International Award for Excellence for new research or thinking in the area of the constructed environment. All articles submitted for publication in *The International Journal of the Constructed Environment* are entered into consideration for this award. The review committee for the award is selected from the International Advisory Board for the journal and the annual International Conference on the Constructed Environment. The committee selects the winning article from the ten highest-ranked articles emerging from the review process and according to the selection criteria outlined in the reviewer guidelines.

Award Winner, Volume 6

Timothy Oluseun Adekunle, University of Hartford, West Hartford, USA

For the Article

"Autonomous Living: An Eco-social Perspective"

Abstract

Autonomous living enables occupants to generate zero-carbon emissions from all energy use in a building, while eco-sociality empowers people to participate in the process. Eco-sociality is a sustainability process that encourages people to develop social interactions and live consciously to treat their environment well. The process requires a transformation approach as global warming creates environmental problems, and there is a need for an improved way of living that can mitigate the effects of climate change and enhance our overall well-being. The existing literature has shown that past sustainability processes yield few results because they focus on a technological-based approach rather than exploring an eco-social approach. This study examines the process of improving people's level of participation in sustainability through autonomous living. The data was gathered through personal and participatory observations, focus group discussions, questionnaires, and semi-structured interviews. The methodology focused on and closely studied people's lifestyles and post-occupancy responsibilities to show people's level of participation in the sustainability process. The result shows the importance of the eco-social factor in the sustainability process. The findings suggest that 71% of the respondents consider autonomous living as a change in lifestyle. The evidence suggests that technological efficiency does not guarantee sustainability. This study has identified that the sustainability process is not an abstract plan of action but a process that involves due process, consultation, and social interaction to increase people's levels of participation.

Community Membership and Personal Subscriptions

As part of each conference registration, all conference participants (both virtual and in-person) have a one-year digital subscription to *The International Journal of the Constructed Environment*. This complimentary personal subscription grants access to the current volume as well as the entire backlist. The period of complimentary access begins at the time of registration and ends one year after the close of the conference. After that time, delegates may purchase a personal subscription.

To view articles, go to <http://ijv.cgpublisher.com/>. Select the “Login” option and provide a CGPublisher username and password. Then, select an article and download the PDF. For lost or forgotten login details, select “forgot your login” to request a new password.

Journal Subscriptions

Common Ground offers print and digital subscriptions to all of its journals. Subscriptions are available to *The International Journal of the Constructed Environment* and to custom suites based on a given institution's unique content needs. Subscription prices are based on a tiered scale that corresponds to the full-time enrollment (FTE) of the subscribing institution.

For more information, please visit:

- <http://constructedenvironment.com/journals/subscribe>
- Or contact us at subscriptions@commongroundpublishing.com

Library Recommendations

Download the Library Recommendation form from our website to recommend that your institution subscribe to *The International Journal of the Constructed Environment*: <http://commongroundpublishing.com/support/recommend-a-subscription-to-your-library>.



UR: Between Regeneration and Resentment

Resentment becomes a lengthening pole between them and us; the have consumer and the have-not consumer. Resentment calls up mass movements, (more) systems take command...pressure groups thrive in unidentified resentment...gangs form in the void where the community ought to be and is wanting.

—Alison Smithson. 1974 “Collective Design: The Violent Consumer, or Waiting for the Goodies.” *Architectural Design* 5: 277.

The history of Urban Regeneration (UR) in contemporary cities is a cyclical one. We have repeatedly seen deprived areas in our cities demolished in a circularity process of destroying the “bad” old past in order to generate a promising new “good” future. We have seen this process happening mainly in areas that are targets of economic pressure, mostly related to fragile social/working housing and their communities.

How can we make visible case studies from different geographies and cultures where this problem happens? How can we unveil the fear related to these cases? How much waste is created in these the UR cyclical processes? How can we protect public spaces and social interests from the increasing economic privatization, when austerity measures are dismantling them in idea and form? How can we create strategies that maintain and improve what exists, rather than repeatedly erase in order to start from scratch? How can we create socially engaged practices that stimulate the reinforcement of social relations in existing communities?

This call for papers aims to bring to discussion and make visible the problem of what is hidden under the persistent “label” of UR. Although this process is presented as a positive outcome for the evolution of cities to enhance the quality of life in urban communities, we intend to begin a conversation that addresses how UR also catalyzes a continuous process of loss not only related to public spaces, but also leading to increased resentment among communities. Both are opposed to the so-called process of progression.

To address this important issue, we welcome cross-disciplinary proposals, both theoretical and practical, from those that are research-based to concrete, engaged transformation projects that bring to the forefront the complexity of this problem.

“UR: Between Regeneration and Resentment” is intended as an open forum of debate and reflection to be tackled by The Constructed Environment Knowledge Community. We welcome all to share their knowledge based on their experience and background.

The Constructed Environment Book Imprint

*Aiming to set new standards in
participatory knowledge creation
and scholarly publication*



Call for Books

Common Ground is setting new standards of rigorous academic knowledge creation and scholarly publication. Unlike other publishers, we're not interested in the size of potential markets or competition from other books. We're only interested in the intellectual quality of the work. If your book is a brilliant contribution to a specialist area of knowledge that only serves a small intellectual community, we still want to publish it. If it is expansive and has a broad appeal, we want to publish it too, but only if it is of the highest intellectual quality.

We welcome proposals or completed manuscript submissions of:

- Individually and jointly authored books
- Edited collections addressing a clear, intellectually challenging theme
- Collections of articles published in our journals
- Out-of-copyright books, including important books that have gone out of print and classics with new introductions

Book Proposal Guidelines

Books should be between 30,000 and 150,000 words in length. They are published simultaneously in print and electronic formats and are available through Amazon and as Kindle editions. To publish a book, please send us a proposal including:

- Title
- Author(s)/editor(s)
- Draft back-cover blurb
- Author bio note(s)
- Table of contents
- Intended audience and significance of contribution
- Sample chapters or complete manuscript
- Manuscript submission date

Proposals can be submitted by email to books@commongroundpublishing.com. Please note the book imprint to which you are submitting in the subject line.



Call for Book Reviewers

Common Ground Publishing is seeking distinguished peer reviewers to evaluate book manuscripts.

As part of our commitment to intellectual excellence and a rigorous review process, Common Ground sends book manuscripts that have received initial editorial approval to peer reviewers to further evaluate and provide constructive feedback. The comments and guidance that these reviewers supply is invaluable to our authors and an essential part of the publication process.

Common Ground recognizes the important role of reviewers by acknowledging book reviewers as members of the Editorial Review Board for a period of at least one year. The list of members of the Editorial Review Board will be posted on our website.

If you would like to review book manuscripts, please send an email to books@commongroundpublishing.com with:

- A brief description of your professional credentials
- A list of your areas of interest and expertise
- A copy of your CV with current contact details

If we feel that you are qualified and we require refereeing for manuscripts within your purview, we will contact you.



Structural Elements for Architects and Builders: Design of Columns, Beams, and Tension Elements in Wood, Steel, and Reinforced Concrete, 2nd Edition

Jonathan Ochshorn



Concise but comprehensive, Jonathan Ochshorn's *Structural Elements for Architects and Builders* explains how to design and analyze columns, beams, tension members, and their connections. The material is organized into a single, self-sufficient volume, including all necessary data for the preliminary design and analysis of these structural elements in wood, steel, and reinforced concrete. Every chapter contains insights developed by the author and generally not found elsewhere. Appendices included at the end of each chapter contain numerous tables and graphs, based on material contained in industry publications, but reorganized and formatted especially for this text to improve clarity and simplicity, without sacrificing comprehensiveness. Procedures for design and analysis are based on the latest editions of the *National Design Specification for Wood Construction* (AF&PA and AWC), the *Steel Construction Manual* (AISC), *Building Code Requirements for Structural Concrete* (ACI), and *Minimum Design Loads for Buildings and Other Structures* (ASCE/SEI).

ISBN—978-1-61229-801-6
428 Pages

Community Website:
[constructed
environment.com](http://constructedenvironment.com)

Bookstore:
[theconstructedenvironment.
cgpublisher.com](http://theconstructedenvironment.cgpublisher.com)

This thoroughly revised and expanded second edition of *Structural Elements* includes an introduction to statics and strength of materials, an examination of loads, and new sections on material properties and construction systems within the chapters on wood, steel, and reinforced concrete design. This permits a more comprehensive overview of the various design and analysis procedures for each of the major structural materials used in modern buildings. Free structural calculators (*search online for: Ochshorn calculators*) have been created for many examples in the book, enabling architects and builders to quickly find preliminary answers to structural design questions commonly encountered in school or in practice.

Author Bio:

Jonathan Ochshorn is a registered architect with an academic background in structural engineering and urban design as well as architecture. Prior to joining the faculty at Cornell University in 1988, he served as associate director of the City College Architectural Center, a research center supplying technical assistance to community groups in New York City. His publications include studies on tapered insulation, column buckling, building failures, the relationship of design theory to technical practice, and strategies for teaching structures to architects. His teaching specialties in the Department of Architecture at Cornell University are in the areas of construction technology and structures.



The Impact of Globalisation on Architecture and Architectural Ethics

Faida Noori Salim



ISBN—978-1-86335-890-3
271 Pages

Community Website:
[constructed
environment.com](http://constructedenvironment.com)

Bookstore:
[theconstructedenvironment.
cgpublisher.com](http://theconstructedenvironment.
cgpublisher.com)

The development of globalisation, both economically and financially, has promoted the flow of both information and people. Globalisation is seen as an outcome of advancing communication technology and the development of the Internet, which subsequently encouraged international interdependence and the compression of time and space. This book is devoted to answering the question: In what way does the impact of globalisation affect the role of architecture, and how should it be interpreted ethically? This book argues that the ethical evaluation of the role of architecture should be linked to architecture's natural ethical responsibility to form a relationship with a culture. Today, iconic architectural forms and celebrity architects lead the innovation/transformation process, while the "ordinary" practice of architecture leads the innovation/stabilization process using the differentiation/integration dynamic. Architectural theory advances the use of the interpretation/reinterpretation dynamic in architecture, which helps to destabilise meaning in architectural language. When this theory is transcribed to real world architecture, it can result in the alienation of the physical horizons of cities and thus in the alienation of its citizens.

Author Bio:

Faida Noori Salim is an assistant professor. She graduated from the University of Baghdad in June 1975 and obtained her master's degree in architectural studies at MIT (Massachusetts Institute of Technology) in May 1984. She has taught in three Departments of Architecture in Iraq: The University of Baghdad, The University of Mosul, and the University of Technology. She studied for her doctoral degree at the University of Auckland in New Zealand and graduated in March 2011.

The Constructed Environment Conference

*Curating global interdisciplinary
spaces, supporting professionally
rewarding relationships*

Conference History

Founded in 2010, the International Conference on the Constructed Environment is held annually in different locations, selected for the way each raises specific kinds of questions about the nature of architecture, landscape, and human habitation. The conference is a cross-disciplinary forum which brings together researchers, teachers, and practitioners to discuss the past character and future shape of the built environment. The resulting conversations weave between the theoretical and the empirical, research and application, market pragmatics and social idealism. In professional and disciplinary terms, the conference traverses a broad sweep to construct a trans-disciplinary dialogue which encompasses the perspectives and practices of: architecture, anthropology, business, design, economics, education, engineering, environmental design, industrial design, interior design, landscape architecture, sociology, town and regional planning, and transportation.

Past Conferences

- 2010 - Fondazione Querini Stampalia, Venice, Italy
- 2011 - University Center, Chicago, USA
- 2012 - UBC Robson Square, Vancouver, Canada
- 2013 - Universidade Nova de Lisboa, Lisbon, Portugal
- 2014 - University of Pennsylvania, Philadelphia, USA
- 2015 - University of Arizona, Tucson, USA

Plenary Speaker Highlights

The International Conference on the Constructed Environment has a rich history of featuring leading and emerging voices from the field, including:

- Kathryn H. Anthony, University of Illinois, Urbana-Champaign, USA (2010)
- Winka Dubbeldam, University of Pennsylvania, Philadelphia, USA (2014)
- Beatrice Galilee, Lisbon Architecture Triennale, Lisbon, Portugal (2013)
- Sally Harrison, Temple University, Philadelphia, USA (2014)
- Aaron Levy, Slought Foundation, Philadelphia, USA (2011)
- David Mayerlik, University of Notre Dame, Notre Dame, USA (2010)
- Jeffery S. Poss, University of Illinois, Urbana-Champaign, USA (2010)
- Ryan E. Smith, University of Utah, Salt Lake City, USA (2011)
- Bing Thom, Bing Thom Architects, Vancouver, Canada (2012)

Past Partners:

Over the years the International Conference on the Constructed Environment has had the pleasure of working with the following organizations:



Close, Closer
Associated Project,
Lisbon, Portugal (2013)



Lisbon Architecture Triennale,
Lisbon, Portugal (2013)



Slought Foundation,
Philadelphia, USA (2014)



University of Arizona,
Tucson, USA (2015)

Become a Partner

Common Ground Publishing has a long history of meaningful and substantive partnerships with universities, research institutes, government bodies, and non-governmental organizations. Developing these partnerships is a pillar of our Knowledge Community agenda. There are a number of ways you can partner with a Common Ground Knowledge Community. Contact us at support@constructedenvironment.com to become a partner.

Conference Principles and Features

The structure of the conference is based on four core principles that pervade all aspects of the knowledge community:

International

This conference travels around the world to provide opportunities for delegates to see and experience different countries and locations. But more importantly, The Constructed Environment Conference offers a tangible and meaningful opportunity to engage with scholars from a diversity of cultures and perspectives. This year, delegates from over 25 countries are in attendance, offering a unique and unparalleled opportunity to engage directly with colleagues from all corners of the globe.

Interdisciplinary

Unlike association conferences attended by delegates with similar backgrounds and specialties, this conference brings together researchers, practitioners, and scholars from a wide range of disciplines who have a shared interest in the themes and concerns of this community. As a result, topics are broached from a variety of perspectives, interdisciplinary methods are applauded, and mutual respect and collaboration are encouraged.

Inclusive

Anyone whose scholarly work is sound and relevant is welcome to participate in this community and conference, regardless of discipline, culture, institution, or career path. Whether an emeritus professor, graduate student, researcher, teacher, policymaker, practitioner, or administrator, your work and your voice can contribute to the collective body of knowledge that is created and shared by this community.

Interactive

To take full advantage of the rich diversity of cultures, backgrounds, and perspectives represented at the conference, there must be ample opportunities to speak, listen, engage, and interact. A variety of session formats, from more to less structured, are offered throughout the conference to provide these opportunities.



Plenary

Plenary speakers, chosen from among the world's leading thinkers, offer formal presentations on topics of broad interest to the community and conference delegation. One or more speakers are scheduled into a plenary session, most often the first session of the day. As a general rule, there are no questions or discussion during these sessions. Instead, plenary speakers answer questions and participate in informal, extended discussions during their Garden Conversation.



Garden Conversation

Garden Conversations are informal, unstructured sessions that allow delegates a chance to meet plenary speakers and talk with them at length about the issues arising from their presentation. When the venue and weather allow, we try to arrange for a circle of chairs to be placed outdoors.



Talking Circles

Held on the first day of the conference, Talking Circles offer an early opportunity to meet other delegates with similar interests and concerns. Delegates self-select into groups based on broad thematic areas and then engage in extended discussion about the issues and concerns they feel are of utmost importance to that segment of the community. Questions like "Who are we?", "What is our common ground?", "What are the current challenges facing society in this area?", "What challenges do we face in constructing knowledge and effecting meaningful change in this area?" may guide the conversation. When possible, a second Talking Circle is held on the final day of the conference, for the original group to reconvene and discuss changes in their perspectives and understandings as a result of the conference experience. Reports from the Talking Circles provide a framework for the delegates' final discussions during the Closing Session.



Themed Paper Presentations

Paper presentations are grouped by general themes or topics into sessions comprised of three or four presentations followed by group discussion. Each presenter in the session makes a formal twenty-minute presentation of their work; Q&A and group discussion follow after all have presented. Session Chairs introduce the speakers, keep time on the presentations, and facilitate the discussion. Each presenter's formal, written paper will be available to participants if accepted to the journal.



Colloquium

Colloquium sessions are organized by a group of colleagues who wish to present various dimensions of a project or perspectives on an issue. Four or five short formal presentations are followed by commentary and/or group discussion. A single article or multiple articles may be submitted to the journal based on the content of a colloquium session.



Focused Discussion

For work that is best discussed or debated, rather than reported on through a formal presentation, these sessions provide a forum for an extended “roundtable” conversation between an author and a small group of interested colleagues. Several such discussions occur simultaneously in a specified area, with each author’s table designated by a number corresponding to the title and topic listed in the program schedule. Summaries of the author’s key ideas, or points of discussion, are used to stimulate and guide the discourse. A single article, based on the scholarly work and informed by the focused discussion as appropriate, may be submitted to the journal.



Workshop/Interactive Session

Workshop sessions involve extensive interaction between presenters and participants around an idea or hands-on experience of a practice. These sessions may also take the form of a crafted panel, staged conversation, dialogue or debate—all involving substantial interaction with the audience. A single article (jointly authored, if appropriate) may be submitted to the journal based on a workshop session.



Poster Sessions

Poster sessions present preliminary results of works in progress or projects that lend themselves to visual displays and representations. These sessions allow for engagement in informal discussions about the work with interested delegates throughout the session.

Sunday, 3 April

8:00–9:00	Conference Registration Desk Open
9:00–9:30	Conference Opening—Jeffery Poss, Host, University of Illinois at Urbana-Champaign, Urbana, USA
9:30–10:05	Plenary Session—Kathy Hancox and Michael Kothke, HK Associates, Tucson, USA <i>Influences and Intentions</i>
10:05–10:40	Garden Conversation featuring Kathy Hancox and Michael Kothke
10:40–11:25	Talking Circles
11:25–12:25	Lunch
12:25–14:05	Parallel Sessions
14:05–14:20	Break
14:20–16:00	Parallel Sessions
16:30–17:30	Welcome Reception at the University of Arizona Museum of Art

Monday, 4 April

8:30–9:00	Registration Desk Open
9:00–9:15	Daily Update
9:15–9:50	Plenary Session—R. Brooks Jeffery, UA/CAPLA Drachman Institute, The University of Arizona, Tucson, USA
9:50–10:20	Garden Conversation featuring R. Brooks Jeffery
10:20–10:30	Break
10:30–11:45	Parallel Sessions
11:45–12:45	Lunch
12:45–14:00	Parallel Sessions
14:00–14:15	Break
14:15–15:55	Parallel Sessions
15:55–16:25	Special Event—Closing and Award Ceremony

Special Event

Welcome Reception

Sunday, 3 April | 16:30–17:30

The University of Arizona Museum of Art



On Sunday, 3 April, The Constructed Environment Conference and Common Ground Publishing will be holding a welcome reception at the University of Arizona Museum of Art after the last session of the day. Join delegates and plenaries for drinks, light hors d'oeuvres, and a chance to converse!

Malcolm Alan Compitello

The University of Arizona, Tucson, USA



Dr. Malcolm Alan Compitello is Professor of Spanish Head of the Department of Spanish Portuguese. He came to the University of Arizona from Michigan State University where he was Professor of Spanish and Associate Chair of the Department of Romance and Classical Languages. Professor Compitell received his BA and MA degrees from St. John's University in New York City and his PhD in Hispanic literature with a minor in Comparative Literature from Indiana University. Professor Compitello is the Executive Editor of the Arizona Journal of Hispanic Cultural Studies and serves on the editorial boards of a number of other publication. Professor Compitello has authored and edited three books on contemporary Spanish literature and numerous articles on contemporary literature and Cultural Studies. His most recent edited volume (with Edward Baker) is *De Fortunata a M:40. Un siglo de cultura urbana* (Madrid: Alianza, 2003). Professor Compitello's current research is on urban cultural geography in Spain. Professor Compitello is also the Program Director for the Humanities Seminars Program in the College of Humanities and an Honors Professor. He was on the Executive Committee of the Association of Departments of Foreign Languages (ADFL) from 2003–2005 and was President of the Organization in 2005.

Jeffery S. Poss, FAIA

University of Illinois at Urbana-Champaign, Urbana, USA



Jeffery S. Poss, FAIA, is a Professor at the University of Illinois at Urbana Champaign. He received his Master of Architecture from the school in 1980. In the years following he practiced with Skidmore Owings and Merrill, Kevin Roche John Dinkeloo & Associates, and Tai Soo Kim Partners. In 1989 he returned to Urbana-Champaign to begin teaching and practicing architecture. Studio teaching has focused on the development of concept, materials, and detail into architectural design, including design-build structures, furniture design, and the exploration of whole-to-part relationships in architecture, which received the AIA Education Honors Award. His eponymous firm Jeffery S Poss Architect has designed and completed award-winning proposals for residences, interiors, memorials, pavilions, and most recently, flat-pac and ecological architecture. His commissioned and competition work has been published in numerous journals and magazines in print and online. His collected work can be seen at www.jefferyspossarchitect.net.

Kathy Hancox and Michael Kothke

Influences & Intentions



HK Associates Inc. is an award-winning architecture firm made up of husband and wife team Kathy Hancox and Michael Kothke. Before forming HK Associates, Michael and Kathy followed largely independent but parallel career paths, with each making substantial contributions to internationally recognized architecture firms in both Canada and the United States: Patkau Architects, Peter Cardew Architects, Acton Johnson Ostry, Lundberg Design, and Leddy Maytum Stacy. An opportunity to work together with Rick Joy brought them to Tucson, AZ, in 2003 where they fell in love with the desert. HK Associates was established in 2006. "Working together, combining our separate but complimentary experiences—the results feel exponential rather than additive. In our collaboration we strive to create something better than we could achieve individually." HK believes in the power of thoughtful design to enrich life and views every project as an opportunity to create something meaningful. Driven by simplicity and honesty in design, the studio's approach is client and site specific, striving to create spaces and structures that are timeless and enduring, relevant and contextual. Good design is inherently sustainable.

R. Brooks Jeffery



R. Brooks Jeffery is Director of the Drachman Institute at The University of Arizona's College of Architecture Planning and Landscape Architecture (CAPLA) where he is also Coordinator of its multi-disciplinary Graduate Certificate in Heritage Conservation and Professor with joint appointments in the School of Architecture and School of Landscape Architecture & Planning. At the Drachman Institute, Jeffery directs the College's community-based research and outreach arm committed to the scholarship of engagement as a cornerstone of professional design education based on the core values of service-learning, collaborative partnerships, and community impact. Jeffery has spent his career documenting, interpreting, and preserving the significance of built environments throughout the world, including the Middle East, Spain, Latin America, and the Southwestern US. His publications include *Cross-Cultural Vernacular Landscapes of Southern Arizona* (Vernacular Architecture Forum, 2005, co-edited with Laura Hollengreen), "From Azulejos to Zaguanes: The Islamic Legacy in the Built Environment of Hispano-America" (*Journal of the Southwest*, Spring/Summer 2003), *A Guide to Tucson Architecture* (University of Arizona Press, 2002, with Anne M. Nequette), *Joesler & Murphey: An Architectural Legacy for Tucson* (City of Tucson, 1994) and *Yemen: A Culture of Builders* (American Architectural Foundation, 1989). Jeffery has also written dozens of technical reports that advance the knowledge in areas such as the impact of climate change on cultural resources, the contribution of heritage tourism and conservation training in war-torn countries in Middle East, and the revalorization of traditional building practices throughout Latin America. Jeffery has been a principal investigator on numerous grants and contracts from local, regional, and national agencies totaling over \$2.3 million and has received numerous awards for that work. In 2015, he was awarded the distinguished Director's Partnership Award from the National Park Service for "providing innovative leadership in the field of historic preservation" in service to that federal agency. He was also awarded the 2008 Common Ground Award from Tucson's Metropolitan Pima Alliance for his involvement in the Wilmot Library Planning Charette advocating for the preservation, rather than the proposed demolition, of a landmark Modern design as part of an overall sustainable development proposal. In 2007, he was awarded the Alene Dunlap Smith and Paul C. Smith Award from the Tucson-Pima County Historical Commission—Tucson's highest preservation award—for the "high level of dedication and long-term commitment toward historic preservation in our community". In 2006, Jeffery was presented with the "Excellence in Resource Stewardship" award from the National Park Service for his students' work creating design guidelines at Petrified Forest National Monument. In addition to his administration, teaching, and research responsibilities, Jeffery collaborates with governmental and civic agencies on preservation issues locally, regionally, and nationally while serving as a board member on the University of Arizona Historic Preservation Advisory Committee, Arizona Historic Sites Review Committee, and the National Council for Preservation Education. He is a member of the National Trust for Historic Preservation, US/ICOMOS, and Vernacular Architecture Forum.

Elizabeth Cook



Elizabeth Cook is a doctoral candidate in history at the College of William and Mary. A material culture scholar, her research focuses on applied craft knowledge and the production processes that gave shape to worlds past. From this perspective, the urban landscape becomes a bricolage of buildings large and small, materials from near and far, and construction skill both great and poor. When not researching and writing, she leads high school students on field trips as part of the National Institute of American History and Democracy's Pre-Collegiate Program, practices eighteenth-century carpentry and joinery, and plays in the dirt as an archaeologist.

Anthony Pratcher II



Anthony Pratcher II is a Faculty Associate in the School of Historical, Philosophical, and Religious Studies at Arizona State University and a PhD candidate in the History Department at the University of Pennsylvania. His dissertation, *Community Consumed: Sunbelt Capitalism, the Politics of Community Control, and the Financialization of Civic Life in Suburban America*, focuses on the intersection of urban policy and everyday community practices in order to illustrate how the privatization of community institutions asphyxiated civic life within master-planned suburban community of Maryvale, Arizona. He expects to complete his PhD in May 2017.

Adnya Sarasmita



Adnya Sarasmita is a second-year doctoral student in Built Environment, an interdisciplinary PhD program under the College of Built Environments at the University of Washington-Seattle. She received a Bachelor of Architecture degree from Universitas Brawijaya, Indonesia, and a Master of Science in Urban and Regional Planning from The University of Iowa, where she was funded through the Fulbright Indonesia Research Science and Technology scholarship award. Her current research focuses on urban informality in cities of the Global South, particularly in her homeland, Indonesia. She is interested in the resilience of everyday practices in informal public spaces and its implications on social and spatial dynamics.

Vera Chami Alves de Souza



Vera Chamie de Souza is an architect and urban planner. She is a PhD candidate in Urban Development from the Federal University of Pernambuco (UFPE), Brazil. She holds an MA in Urban Planning from UCLA, is an MA Urban Development graduate, and holds a Bachelor's degree in Architecture and Urbanism from UFPE. Her planning practice focuses on city planning and her architectural practice focuses on residential single and multi-family units. Her research topics of interest include human-centered design, interpersonal relationships of reciprocity, space perception, urban space design, and human behavior. She is currently researching spatial characteristics that facilitate interpersonal relations of reciprocity at urban scale.

James Thompson



James Thompson is a doctoral candidate in the University of Washington's Built Environment program, where his dissertation explores how students and recent graduates of the Master of Architecture program make sense of "becoming an architect." He teaches a range of courses in the University of Washington's College of Built Environments, including history, theory, design, and representation at both undergraduate and graduate levels. Prior to entering the PhD program, James received an MArch from the University of Minnesota and worked professionally for design firms across the United States.

Laura Vázquez



Laura Vázquez is a PhD candidate in the Department of Spanish and Portuguese at the University of Arizona. She earned an MA in Hispanic Literature from the University of Arizona, an MA in American Studies from the University of Alcalá (Instituto Franklin), and a BA in English Linguistics and Literature from the University of Alcalá, Spain. Laura's current research is on urban cultural studies, culinary tourism, visual and media culture, and film. She is particularly interested in the connection between cities, culture, food, and capital as a frame of reference to examine how urban processes are portrayed through cultural production.

SATURDAY, 02 APRIL

SATURDAY, 02 APRIL	
7:30-12:30	ARIZONA SONORA MUSEUM TOUR
13:30-14:15	SAN XAVIER MISSION TOUR



SUNDAY, 03 APRIL

SUNDAY, 03 APRIL	
8:00-9:00	REGISTRATION DESK OPEN
9:00-9:30	CONFERENCE OPENING - JEFFERY POSS, HOST, UNIVERSITY OF ILLINOIS AT URBANA-CHAMPAIGN, CHAMPAIGN, USA
9:30-10:05	PLENARY SESSION - KATHY HANCOX AND MICHAEL KOTHIKE, HK ASSOCIATES, TUCSON, USA; "INFLUENCES & INTENTIONS"
10:05-10:40	GARDEN CONVERSATION FEATURING KATHY HANCOX AND MICHAEL KOTHIKE AND COFFEE BREAK
10:40-11:25	TALKING CIRCLE
Room 1	Talking Circle 1 - Design and Planning Processes
Room 2	Talking Circle 2 - Building Processes
Room 3	Talking Circle 3 - Environmental Impacts
Room 4	Talking Circle 4 - Social Impacts
11:25-12:25	LUNCH
12:25-14:05	PARALLEL SESSIONS
Room 1	<p>Sustainable Building Practices and Environmental Ethics</p> <p>Building Materials and Environmental Impacts: Trends in the Use of Construction Materials in Residential Buildings in Cameroon and Their Environmental Impacts Toh Simon Mbembuen, <i>Environmental Science and Technology, University of Gent, Gent, Belgium</i> Overview: This study focuses on the environmental impact of different construction materials employed in the construction of residential buildings in Cameroon using the life cycle assessment (LCA) technique. Theme: <i>Environmental Impacts</i></p> <p>Wish Lists and Trade-offs: Planning Safe and Healthy Schools Hans Peter (Hepi) Wachter, <i>College of Architecture, Division of Interior Design, The University of Oklahoma, Norman, USA</i> Dr. Lisa Holiday, <i>Construction Science, College of Architecture, University of Oklahoma, Norman, USA</i> Dr. Marguerite Keesee, <i>Center for Spatial Analysis, University of Oklahoma, Norman, USA</i> Overview: This paper illuminates what are the factors leading to trade-offs, such as between structural hardening and sustainable building design, in the design and planning of safe and healthy schools. Theme: <i>Design and Planning Processes</i></p> <p>The Unambiguous Description of a Home Ownership Title in Nigeria: A Cadastral Survey Plan Utilization Olukemi O. Olowofoyeku, <i>Surveying and Geoinformatics Department, Yaba College of Technology, Yaba, Nigeria</i> Akinwumi Akinpelu, <i>Department of Building Technology, Lagos State Polytechnic, Alimosho, Nigeria</i> Olatunji Abisuga, <i>Department of Building Technology, Lagos State Polytechnic, Lagos, Nigeria</i> Overview: The emergence of ownership of units in multi-storey buildings, due to a growing population and land scarcity, requires secure titling through unambiguous description with cadastral survey plans. Theme: <i>Social Impacts</i></p>
Room 2	<p>Material and Design Advancements</p> <p>Sustainable Futures: Solid Timber Applications in Mid-rise Construction Jacob Gines, <i>School of Architecture, Mississippi State University, Starkville, USA</i> Overview: Recent advancements in solid timber technology and construction practices provide new opportunities that challenge current height restrictions for wood buildings and reimagine the materiality, sustainability, and aesthetics of contemporary building. Theme: <i>Building Processes</i></p> <p>Design as Research, Design across Disciplines, Re-designing the Wheel Mohamed Maged Rowaizak, <i>Architecture, American University of Sharjah, Sharjah, United Arab Emirates</i> Overview: This paper argues for an understanding of environmentally-friendly architecture by exploring the intelligent behavior of living things. The research explores designing methods to grow structures. Theme: <i>Environmental Impacts</i></p> <p>Tracing Comfort through the Technical Agencies of Concrete Athena Moustaka, <i>University of Manchester, Manchester, UK</i> Overview: Tracing stories of concrete and its technical performance in Park Hill, by means of interviews with its architects and engineers, reveals instances of comfort articulated and enacted by the material. Theme: <i>Building Processes</i></p>
Room 3	<p>Education and Training for the Constructed Environment</p> <p>Factors That Influence Students' Choice of Careers in an Urban and Regional Planning Program Peter Fosudo, <i>Urban and Regional Planning, Lagos State Polytechnic, Ikorodu, Nigeria</i> Overview: This study explores the factors that are most influential in attracting undergraduate students to an Urban and Regional Planning program in a Polytechnic. Theme: <i>Social Impacts</i></p> <p>A Pre-disciplinary Approach to Built Environments Education: Seattle on Foot Daniel Coslett, <i>College of Built Environments, University of Washington, Seattle, USA</i> James Thompson, <i>College of Built Environments, University of Washington, Seattle, USA</i> Overview: Discussing a pre-disciplinary approach for introducing undergraduates to the built environment, this paper examines the implementation of a course that employed multiple delivery methods including thematic self-guided urban excursions. Theme: <i>Design and Planning Processes</i></p>



SUNDAY, 03 APRIL

12:25-14:05	PARALLEL SESSIONS
Room 4	Examinations of Space and Place <p>"Madreat," "Madrid Global," "Madrid Fusion": The Development of Madrid Gourmet Spaces as Part of the City's Symbolic Economy Laura Vázquez Blázquez, <i>Department of Spanish and Portuguese, University of Arizona, Tucson, USA</i> <i>Overview:</i> This work examines the relationship between cities, culture, and capital to study many gourmetized spaces as part of the municipal government's strategy of marketing the brand "Madrid." <i>Theme: Social Impacts</i></p> <p>Paper Places: An Exploration of Childhood, Mapmaking, and the Commons Alex Megelas, <i>Office of Community Engagement, Concordia University, Montreal, Canada</i> Shane Watt, <i>Montreal, Canada</i> <i>Overview:</i> Paper Places is a series of workshop discussions for children and adults considering mapmaking as a means of interpreting public spaces and the commons. <i>Theme: Social Impacts</i></p> <p>Physical Conditions of Neighborhoods and Depression: A Systematic Review Naemun Gu, <i>Program in the Built Environment, College of Built Environments, University of Washington, Seattle, USA</i> <i>Overview:</i> This paper focuses on reviewing the studies which investigate the relationship between a neighborhoods' built environment and depression in order to identify future directions for this research area. <i>Theme: Social Impacts</i></p>
14:05-14:20	BREAK
14:20-16:00	PARALLEL SESSIONS
Room 1	Workshop (45 minutes) <p>3D Printing in the Design Process: Haptic Feedback Improves Analysis and Communication Andrew Brody, <i>Department of Interior Design, Endicott College, Beverly, USA</i> <i>Overview:</i> What is the best way to integrate relatively cheap, fast 3D printers into the design process? This workshop addresses 2D drawings, 3D electronic and physical models, and evaluates their effectiveness. <i>Theme: Design and Planning Processes</i></p>
Room 2	Critical Social Studies: Histories, Aesthetics, and Politics <p>The Capitalist Carpenter: William George and the Construction of Commercial Richmond, Virginia Elizabeth Cook, <i>Lyon G. Tyler Department of History, College of William and Mary, Williamsburg, USA</i> <i>Overview:</i> This paper explores how men in the building trades balanced the demands of Richmond's industrial and capitalist landscape against those of an occupation that relied on handwork and trade knowledge. <i>Theme: Building Processes</i></p> <p>Evental Discourse to Encyclopedic Knowledge: From Raymond Roussel to Le Corbusier Ioli Zavitsanou, <i>Department of Architectural Language, Communication, and Design, National Technical University of Athens, Athens, Greece</i> <i>Overview:</i> This paper investigates the interwar discourse of modern architecture through a parallel reading of Le Corbusier's "Toward an Architecture" and Raymond Roussel's "Impressions d' Afrique." <i>Theme: Design and Planning Processes</i></p>
Room 3	Adaptation and Renewal in Urban Spaces <p>Imagining Lalehzar Street: Tomorrow, Far from Dilapidated Sara Khorshidifard, <i>Department of Architecture and Environmental Design, College of Technology, Architecture, and Applied Engineering, Bowling Green State University, Bowling Green, USA</i> <i>Overview:</i> Out-of-use buildings are premium assets for reuse and innovation, with added capacities for outside-the-box design. I discuss the case of Tehran's Lalehzar Street with its number of vacant theaters. <i>Theme: Design and Planning Processes</i></p> <p>Redesigning a Mid-twentieth Century Residence in Southern California: Addressing Present and Future Needs as Owner and Designer through Modernization, Sustainability, and Accessibility Goals John R. Kleinpeter, <i>Department of Design, California State University Long Beach, Long Beach, USA</i> <i>Overview:</i> A non-architect's approach to modernization, sustainability, and accessibility in the redesign of an older home. The implications encourage inclusive design, participatory design, and the value of personalization. <i>Theme: Design and Planning Processes</i></p> <p>Retro/Active Revitalizations: Spatial Restoration in Houston Prof. Ziad Qureshi, <i>College of Architecture and Design, University of Houston, Houston, USA</i> <i>Overview:</i> Retroactively revitalizing "lost" spaces via environmental resurrection is increasingly possible via emerging technologies. This discussion addresses questions of virtual/real space, adaptive Interiors, and restored human memory through new technologies. <i>Theme: Design and Planning Processes</i></p>



SUNDAY, 03 APRIL

14:20-16:00	PARALLEL SESSIONS
Room 4	<p>Construction Planning and Process</p> <p>Rain Garden Construction at Harrisburg Area Community College Dr. Janka Ovcharovichova, <i>Engineering and Technologies, Harrisburg Area Community College, Harrisburg, USA</i> Overview: This paper discusses the design and construction of a green Best Management Practice by senior students, who designed and constructed a rain garden on the premises of the college. Theme: <i>Building Processes</i></p> <p>Factors Affecting Labor Productivity in the Indian Construction Industry Dr. Ananthanarayanan Kuppuswamy, <i>Building Technology and Construction Management Division, Department of Civil Engineering, Indian Institute of Technology Madras, Chennai, India</i> Dhanraj Manoharan, <i>Kolkata, India</i> Overview: This study explores and evaluates the factors affecting labor productivity and finds the methods to improve productivity in the Indian construction industry. Theme: <i>Building Processes</i></p> <p>Energy Efficiency for Egyptian Housing: Code Compliance and Enforcement Mohamed Edeisy, <i>Department of Civil, Constructional, and Environmental Engineering, Faculty of Engineering, Sapienza University of Rome, Rome, Italy</i> Prof. Carlo Cecere, <i>Department of Civil, Constructional, and Environmental Engineering, Faculty of Engineering, Sapienza University of Rome, Rome, Italy</i> Overview: This paper introduces an overview of the building energy efficiency code in Egypt and discusses compliance and enforcement problems. Theme: <i>Environmental Impacts</i></p>
16:30-17:30	WELCOME RECEPTION - UNIVERSITY OF ARIZONA MUSEUM OF ART



MONDAY, 04 APRIL

MONDAY, 04 APRIL	
8:30-9:00	REGISTRATION DESK OPEN
9:00-9:15	DAILY UPDATE
9:15-9:50	PLENARY SESSION - R. BROOKS JEFFERY, DIRECTOR OF THE UA/CAPLA DRACHMAN INSTITUTE, THE UNIVERSITY OF ARIZONA, TUCSON, USA; "SUSTAINABILITY AND SENSE OF PLACE: DEFINING A NEW VERNACULAR"
9:50-10:20	GARDEN CONVERSATION FEATURING R. BROOKS JEFFERY AND COFFEE BREAK
10:20-10:30	TRANSITION BREAK
10:30-11:45	PARALLEL SESSIONS
Room 1	<p>Challenges for Design and Planning Practices: Urban Planning and Sustainability</p> <p>Courtyard Penthouses: High-rise Courtyard House Prof. Craig Hinrichs, <i>Department of Architecture, Miami University, Oxford, USA</i> Overview: The penthouse combined with a courtyard could produce high-rise courtyard houses that would be highly desirable. This historic multi-cultural dwelling form, refined with appropriate technology, yields a timeless result. Theme: <i>Design and Planning Processes</i></p> <p>People, Planet, Profit, and Parking: Mapping the Effect Autonomous Vehicles Will Have on Cities Joel Feik, <i>Department of Geography, College of Earth and Mineral Sciences, Penn State University, State College, USA</i> Overview: This study explores how self-driving cars may affect cities and the constructed environment across environmental, economic, and social sectors using GIS. Theme: <i>Design and Planning Processes</i></p> <p>Jewels of the City: Winnipeg's Green Legacy in Danger Prof. Anna Thurmayer, <i>Faculty of Architecture, Department of Landscape Architecture, University of Manitoba, Winnipeg, Canada</i> Overview: This paper demonstrates the merits of and threats to Winnipeg, Manitoba's unprotected urban green spaces in order to recommend sustainable approaches for responsible political decisions. Theme: <i>Design and Planning Processes</i></p>
Room 2	<p>Environmental Sustainability Studies and Strategies</p> <p>Attitudes of Professionals in Construction Fields toward Low-carbon Building Design Heng Zhang, <i>Department of Architecture, Institute of Environmental and Behavioral Studies, National Cheng Kung University, Tainan, Taiwan</i> Li-Hsuan Lin, <i>Department of Architecture, Institute of Environmental and Behavioral Studies, National Cheng Kung University, Tainan, Taiwan</i> Overview: This study researches the degree of understanding toward low-carbon buildings (LCB) among professionals in the construction field in Taiwan, exploring the opportunities and obstacles in the promotion of LCB. Theme: <i>Environmental Impacts</i></p> <p>Traditional Settlement versus Mass Housing Settlement in Terms of Sustainability in Turkey Dr. Güler Koca, <i>Architecture, Anadolu University, Eskişehir, Turkey</i> Overview: This paper analyses two different settlements in Turkey. The first one is the traditional settlement and the second is the mass housing project. They are compared in terms of sustainability. Theme: <i>Environmental Impacts</i></p>
Room 3	<p>Virtual Space</p> <p>Constructing Virtual Spaces and Social Resistance: Lessons from Cibola Prof. Malcolm Compitello, <i>Department of Spanish and Portuguese, University of Arizona, Tucson, USA</i> Overview: This paper studies the relationships between real and virtual spaces and what the study of the latter can teach us about the construction of the former's built environment. Theme: <i>Social Impacts</i></p> <p>Between the Lines: A Slow Observation of the City Mark Blizard, <i>Department of Architecture, University of Texas at San Antonio, San Antonio, USA</i> Overview: This paper reflects upon the nature of deliberate observation and the practice of sketching. The sketch provides a critical vehicle and mode for our inquiry into the city. Theme: <i>Design and Planning Processes</i></p>
11:45-12:45	LUNCH
12:45-14:00	PARALLEL SESSIONS
Room 1	<p>Politics of the Built Environment</p> <p>Morro Alto and Niemeyer Architectural Project: A Portrayal of Inequality in Brazil Prof. Katia da Costa Bezerra, <i>Department of Spanish and Portuguese, University of Arizona, Tucson, USA</i> Overview: The Minas Gerais new administrative city stands close to favela Morro Alto. I argue that the Administrative City's location and architecture serve various interests but that of the local population. Theme: <i>Social Impacts</i></p> <p>Under a Veil of Grass: Historical Erasure in Tokyo's Showa Kinen Park Dr. Adam Tompkins, <i>Lakeland College Japan, Tokyo, Japan</i> Charles Laurier, <i>Lakeland College Japan, Tokyo, Japan</i> Overview: This paper examines the construction of Showa Kinen Park on the site of the former Tachikawa Air Base and how its design and park programs hide the area's important history. Theme: <i>Social Impacts</i></p>



MONDAY, 04 APRIL

12:45-14:00	PARALLEL SESSIONS
Room 2	Environmental Impacts, Politics, and Water Working on the Levees: The Civilian Conservation Corps, the Rio Grande Rectification Project, and the Making of the United States-Mexico Border Prof. Joanne Kropp, <i>Entering Student Program, The University of Texas at El Paso, El Paso, USA</i> <i>Overview:</i> This paper examines the Rio Grande in the El Paso Valley as a constructed, not a natural, environment and shows that construction has had long-term environmental, economic, and political outcomes. <i>Theme: Social Impacts</i>
Room 3	Urban Design and Planning The Use of Design Precedent in Residential Real Estate Development in China: Concerning the Rapid Urbanization Process Zhou Fang, <i>Department of Building and Real Estate, Hong Kong Polytechnic University, Hong Kong, Hong Kong</i> Patrick S. W. Fong, <i>Department of Building and Real Estate, Hong Kong Polytechnic University, Hong Kong, Hong Kong</i> <i>Overview:</i> This paper focuses on the use of design precedent in residential real estate development in China under the background of rapid process of urbanization and development of real estate industry. <i>Theme: Design and Planning Processes</i>
Room 4	Poster Session (45 minutes) A Case Study of an Operation-critical Control Room with Comparisons to Industry Recommendations Dr. Paulette R. Hebert, <i>Department of Design, Housing, and Merchandising, Oklahoma State University, Stillwater, USA</i> Dr. Greg Clare, <i>Department of Design, Housing, and Merchandising, Oklahoma State University, Stillwater, USA</i> <i>Overview:</i> An operation-critical 24/7 control room, manned by rotating shift workers, was investigated to determine differences among existing lighting conditions and light reflectance values as compared to various industry recommendations. <i>Theme: Design and Planning Processes</i> The Retail Wars: The Built Suburban Environment and the Politics of Community Control in Maryvale, Arizona, 1970-1980 Anthony Pratcher II, <i>History Department, University of Pennsylvania, Philadelphia, USA</i> <i>Overview:</i> This poster explores a political conflict between civic-oriented residents on the local planning commission and their elected representatives concerning over-development of retail space in the Phoenix neighborhood of Maryvale. <i>Theme: Design and Planning Processes</i> Fluid Structure: Street as Self-organized Public Space Adnya Sarasmita, <i>College of Built Environments, University of Washington, Seattle, USA</i> <i>Overview:</i> This spatial study of space observes how streetscape adapts to accommodate new, self-organized uses and how this emergence stimulates collaboration between diverse actors in a contested public space. <i>Theme: Social Impacts</i>
14:00-14:15	BREAK
14:15-15:55	PARALLEL SESSIONS
Room 1	Project Management, Processes, and Practices Tiger's Paradise: How to Design Spontaneity and Freedom for Children and Butterflies? Prof. Dietmar Straub, <i>Faculty of Architecture, Department of Landscape Architecture, University of Manitoba, Winnipeg, Canada</i> <i>Overview:</i> How is it possible to design nature for children? This paper "plays" with "vagrant places" that meander, change, and allow children to discover untapped opportunities. <i>Theme: Design and Planning Processes</i> The Development of a Public Wayfinding System for a Popular County Trail Prof. Kimberly Mitchell, <i>School of Communication, Northern Arizona University, Flagstaff, USA</i> <i>Overview:</i> This paper discusses how students worked closely with members of Parks and Recreation members to design a public wayfinding system for a popular trail in the county park. <i>Theme: Social Impacts</i>



MONDAY, 04 APRIL

14:15-15:55	PARALLEL SESSIONS
Room 2	<p>Sociopolitical and Community Impacts</p> <p>Transitions: Place Production and the Landscape Idea Prof. Luis Felipe Alonso, <i>Department of Urban and Regional Planning, Superior Technical School of Architecture of Madrid, Madrid, Spain</i> <i>Overview:</i> This paper discusses landscape and the notion of transition as basic contributors to the physical/functional armature in the structuring and design of informal urban territories of peripheral dispersion. <i>Theme: Design and Planning Processes</i></p> <p>Citizen's Participation and Social Sustainability in the Making of the Built Environment Rolando Gonzalez, <i>School of Architecture, Southern Illinois University, Carbondale, USA</i> <i>Overview:</i> Socially sustainable towns are the result of people's involvement, with sufficient doses of positive relationships and creative interaction. Citizen's participation tends to social cohesion, which in turn leads to solidarity. <i>Theme: Social Impacts</i></p> <p>Contextualizing Landscape Design for Cultural Traditions: A Case of Community Open Spaces in Pune, India Dr. Abhijit Natu, <i>BKPS College of Architecture, Savitribai Phule Pune University, Pune, India</i> <i>Overview:</i> This study points towards the need for contextualizing open space design, thus creating cultural responsive settings conducive for cultural activities. <i>Theme: Design and Planning Processes</i></p> <p>Urban Relational Space: Spatial Characteristics That Facilitate Interpersonal Relations of Reciprocity Vera Chamie Alves de Souza, <i>Department of Urban Development, Federal University of Pernambuco, Recife, Brazil</i> Dr. Maria de Jesus de Brito Leite, <i>Federal University of Pernambuco, Recife, Brazil</i> <i>Overview:</i> This research identifies which urban spatial characteristics can propitiate the trust necessary for its users to develop interpersonal interactions of reciprocity. <i>Theme: Design and Planning Processes</i></p>
Room 3	<p>Approaches to Education in the Constructed Environment</p> <p>The Material Language of Building Asst. Prof. Eric Weber, <i>School of Architecture, University of Nevada - Las Vegas, Las Vegas, USA</i> <i>Overview:</i> A vital component of architectural education is learning how to utilize building materials as carriers of architectural meaning. The development of a coherent tectonic language is fundamental to teaching architecture. <i>Theme: Design and Planning Processes</i></p> <p>Full-scale Conflict: Digital Fabrication and Craftsmanship Olivier Chamel, <i>School of Architecture and Engineering Technology, Florida A&M University, Tallahassee, USA</i> <i>Overview:</i> This paper investigates the relationship between digital fabrication and craftsmanship and determines how the two can be complementary and enrich a design build process. <i>Theme: Design and Planning Processes</i></p>
15:55-16:25	SPECIAL EVENT - CLOSING AND AWARD CEREMONY



Samah	Abraham	University of Cincinnati	USA
Tosin Olla	Adams	Zico Geotech Nigeria Ltd.	Nigeria
Timothy Oluseun	Adekunle	University of Hartford	USA
Akinwumi	Akinpelu	Lagos State Polytechnic	Nigeria
Luis Felipe	Alonso	Departamento de Urbanística y Ordenación del Territorio	Spain
Renata	Aquino	Federal University of Ceará, UFC	Brazil
Katia da Costa	Bezerra	University of Arizona	USA
Mark	Blizard	University of Texas at San Antonio	USA
Andrew	Brody	Endicott College	USA
Olivier	Chamel	Florida A&M University	USA
Vera	Chamie Alves de Souza	Federal University of Pernambuco	Brazil
Tanzila Samad	Choudhury	Ahsanullah University of Science and Technology	Bangladesh
Malcolm	Compitello	University of Arizona	USA
Elizabeth	Cook	College of William and Mary	USA
Henrique	Cunha Junior	Universidade Federal do Ceará, UFC	Brazil
Robert	Dalton	Michigan State University	USA
Mark H.	Dixon	Ohio Northern University	USA
Stephanie	Ebersohl	Common Ground Publishing	USA
Mohamed	Edeisy	Sapienza University of Rome	Italy
Zhou	Fang	The Hong Kong Polytechnic University	Hong Kong
Joel	Feik	Penn State University	USA
Peter	Fosudo	Lagos State Polytechnic	Nigeria
Jacob	Gines	Mississippi State University	USA
Rolando	Gonzalez	Southern Illinois University	USA
Naeun	Gu	University of Washington	USA
Kathy	Hancox	HK Associates	USA
Khan Mahmud	Hasanat	Assort Housing and Engineering Ltd.	Bangladesh
Paulette R.	Hebert	Oklahoma State University	USA
Craig	Hinrichs	Miami University	USA
Ming	Hu	American Institute of Architects	USA
R. Brooks	Jeffery	Drachman Institute, The University of Arizona	USA
Emily	Kasak	Common Ground Publishing	USA
Sara	Khorshidifard	Bowling Green State University	USA
John R.	Kleinpeter	California State University Long Beach	USA
Guler	Koca	Anadolu University	Turkey
Michael	Kothke	HK Associates	USA
Joanne	Kropp	The University of Texas at El Paso	USA
Ananthanarayanan	Kuppuswamy	Indian Institute of Technology, Madras	India
Sharon	Lin	Institute of Environmental and Behavioral Studies	Taiwan
Alberto Casado	Lordsleem Jr.	Instituto de Apoio á Fundação Universidade de Pernambuco	Brazil
Sandile	Mbatha	University of Stuttgart	Germany
Toh Simon	Mbembuen	University of Gent	Belgium
Alex	Megelas	Concordia University	Canada
Kimberly	Mitchell	Northern Arizona University	USA
Athena	Moustaka	Salford University, Manchester	UK
Abhijit	Natu	BKPS College of Architecture, Savitribai Phule Pune University	India

Christopher Mulenga	Nondo	School of The Built Environment	Zambia
Ifeoluwa Oyeleke	Ojelabi	Cyprus International University	Cyprus
Janka	Ovcharovichova		USA
Jeffrey	Poss	University of Illinois at Urbana-Champaign	USA
Anthony	Pratcher II	University of Pennsylvania History Department	USA
Mohamed Maged	Rowaizak	American University of Sharjah	United Arab Emirates
Adnya	Sarasmita	University of Washington, Seattle	USA
Dietmar	Straub	University of Manitoba	Canada
James	Thompson	University of Washington, College of Built Environments	USA
Anna	Thurmayr	University of Manitoba	Canada
Laura	Vázquez Blázquez	University of Arizona	USA
Hans Peter	Wachter	The University of Oklahoma	USA
Eric	Weber	University of Nevada, Las Vegas	USA
Ewelina Anna	Wozniak-Szpakiewicz	Cracow University of Technology	Poland
Ioli	Zavitsanou	National Technical University of Athens	Greece











Sixteenth International Conference on Knowledge, Culture & Change in Organizations

University of Hawaii at Manoa

Honolulu, USA | **19–20 April 2016**

www.organization-studies.com/2016-conference



Eighth International Conference on Climate Change: Impacts & Responses

VNU University of Science (HUS) and

Vietnam National University, Hanoi (VNU)

Hanoi, Vietnam | **21–22 April 2016**

www.on-climate.com/2016-conference



Inaugural International Conference on Tourism & Leisure Studies

University of Hawaii at Manoa

Honolulu, USA | **22–23 April 2016**

www.tourismandleisurestudies.com/2016-conference



Seventh International Conference on Sport & Society

University of Hawaii at Manoa

Honolulu, USA | **2–3 June 2016**

www.sportandsociety.com/2016-conference



Fourteenth International Conference on New Directions in the Humanities

University of Illinois at Chicago

Chicago, USA | **8–10 June 2016**

www.thehumanities.com/2016-conference



Ninth Global Studies Conference

University of California, Los Angeles

Los Angeles, USA | **30 June–1 July 2016**

www.onglobalization.com/2016-conference



Twenty-third International Conference on Learning

University of British Columbia

Vancouver, Canada | **13–15 July 2016**

www.thelearner.com/2016-conference



Sixteenth International Conference on Diversity in Organizations, Communities & Nations

The University of Granada

Granada, Spain | **27–29 July 2016**

www.ondiversity.com/2016-conference



Eleventh International Conference on Interdisciplinary Social Sciences

Imperial College London

London, UK | **2–4 August 2016**

www.thesocialsciences.com/2016-conference



Eleventh International Conference on the Arts in Society

University of California, Los Angeles

Los Angeles, USA | **10–12 August 2016**

www.artsinsociety.com/2016-conference



Sixth International Conference on the Image

Art and Design Academy,

Liverpool John Moores University

Liverpool, UK | **1–2 September 2016**

www.ontheimage.com/2016-conference



Inaugural Communication & Media Studies Conference

University Center Chicago

Chicago, USA | **15–16 September, 2016**

www.oncommunicationmedia.com/2016-conference



Ninth International Conference on the Inclusive Museum

National Underground Railroad Freedom Center
Cincinnati, USA | **16-19 September 2016**
www.onnmuseums.com/2016-conference



Aging & Society: Sixth Interdisciplinary Conference

Linköping University
Linköping, Sweden | **6-7 October 2016**
www.agingsandsociety.com/2016-conference



Sixth International Conference on Food Studies

University of California at Berkeley
Berkeley, USA | **12-13 October 2016**
www.food-studies.com/2016-conference



Sixth International Conference on Health, Wellness & Society

Catholic University of America
Washington D.C., USA | **20-21 October 2016**
www.healthandsociety.com/2016-conference



Spaces & Flows: Seventh International Conference on Urban & ExtraUrban Studies

University of Pennsylvania
Philadelphia, USA | **10-11 November 2016**
www.spacesandflows.com/2016-conference



Thirteenth International Conference on Environmental, Cultural, Economic & Social Sustainability

Greater Rio de Janeiro, Brazil | **19-21 January 2017**
www.onsustainability.com/2017-conference



Seventeenth International Conference on Knowledge, Culture, and Change in Organizations

Charles Darwin University
Darwin, Australia | **20-21 April 2017**
www.organization-studies.com/2017-conference



Seventh International Conference on the Constructed Environment

International Cultural Centre
Krakow, Poland | **25-26 May 2017**
www.constructedenvironment.com/2017-conference



Thirteenth International Conference on Technology, Knowledge & Society

University of Toronto
Toronto, Canada | **26-28 May 2017**
www.techandsoc.com/2017-conference



Tenth Global Studies Conference

National University of Singapore
Singapore | **8-9 June 2017**
www.onglobalization.com/2017-conference



Twelfth International Conference on the Arts in Society

Pantheon-Sorbonne University
Paris, France | **14-16 June 2017**
www.artsinsociety.com/2017-conference



Fifteenth International Conference on New Directions in the Humanities

Imperial College London
London, UK | **5-7 July 2017**
www.thehumanities.com/2017-conference

Call for Papers

Seventh International Conference on The Constructed Environment

25–26 MAY 2017 | CRACOW UNIVERSITY OF TECHNOLOGY | KRAKOW, POLAND
CONSTRUCTEDENVIRONMENT.COM



Returning Member Registration

We are pleased to offer a Returning Member Registration Discount to delegates who have attended The Constructed Environment Conference in the past. Returning community members receive a discount off the full conference registration rate. Registration includes:

- Attendance and participation at all conference sessions and presentations, including plenary addresses and parallel sessions.
- Lunch and coffee breaks on the days of the conference.
- Attendance at Welcome Reception and Book Launches (when included in conference events).
- Citation and Summary of work in printed conference program, and complete abstract included in the online Post-Conference materials.
- Membership in **The Constructed Environment Knowledge Community**.

Proposal & Registration Dates

Proposal Deadlines

Advanced Proposal Deadline	25 July 2016
Early Proposal Deadline	25 October 2016
Regular Proposal Deadline	25 February 2017
Late Proposal Deadline	25 April 2017

Registration Deadlines

Advanced Registration Deadline	25 August 2016
Early Registration Deadline	25 November 2016
Regular Registration Deadline	25 May 2017